



Office : 40 Thap Doi, Quy Nhon, Binh Dinh, Vietnam.

Factory: Lot A30, Road No 15, Phu Tai IP, Quy Nhon, Vietnam.

Tell: +84-256-3792492. Fax: +84-256-3792654

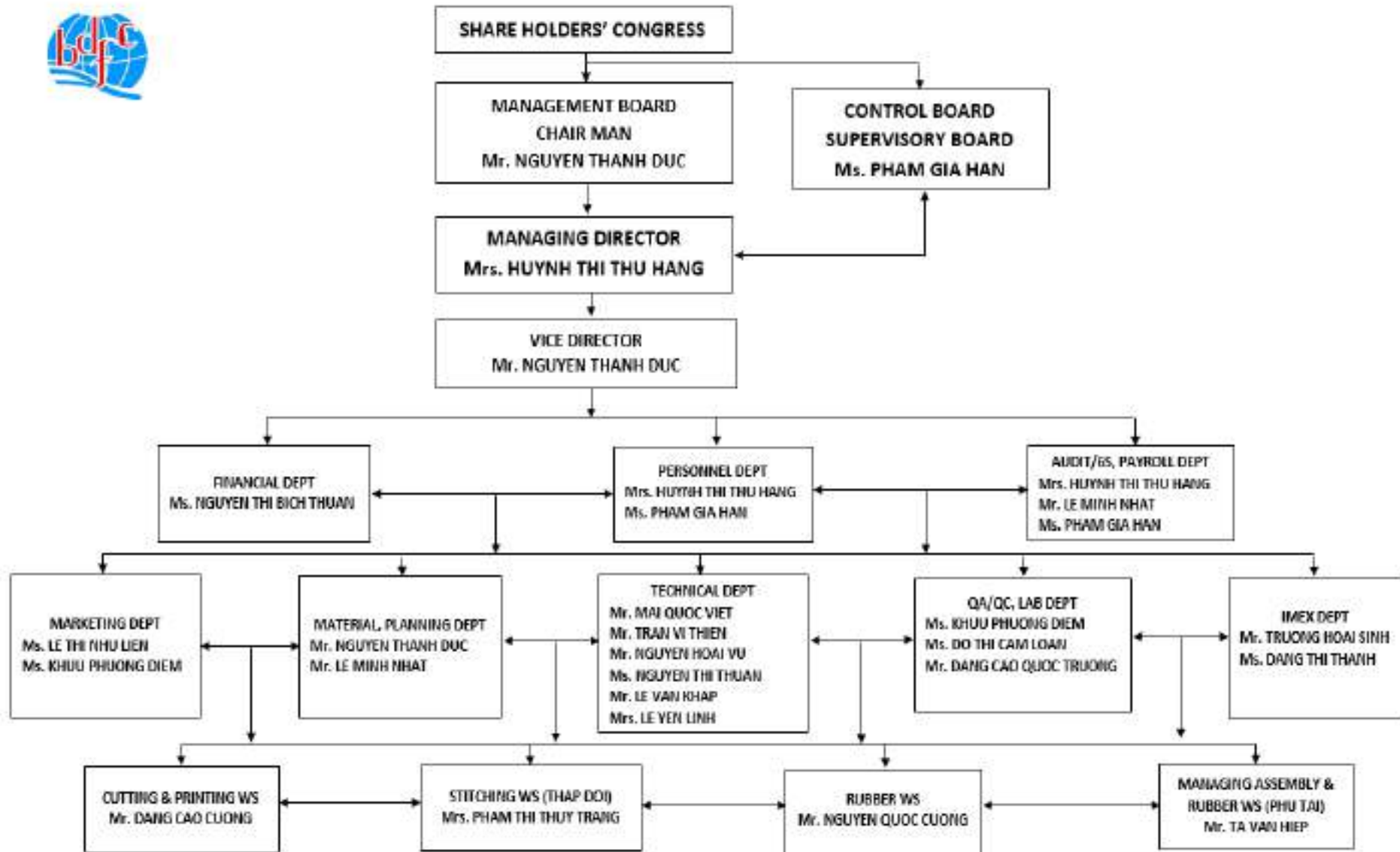
Company preface

Binh Dinh Footwear Joint Stock Company (BDFC) was founded in 1976, primarily engaged in rubber industry then switched into shoes production in 1993. Our products consists of vulcanized and cold cementing shoes with all kinds of upper, outsoles materials and various stylish design for kids, ladies and men.

Enjoying a good reputation for stable quality, punctual shipment and competitive price, our products are welcomed in worldwide markets such as European, North America, Japan.

We are looking forward to establish a long term business cooperation with all trade partners in the world.

Organization Chart



Company Profile

Company name	BINH DINH FOOTWEAR JOINT STOCK COMPANY
Trade name	BDFC
Scope of activity	Footwear export
Year established	1976
Address	40 Thap Doi, Quy Nhon, Binh Dinh, Vietnam.
Possessive status	Joint Stock
Tel - Fax	84 256 3792 492 – 84 256 3792 654
E-mail	infor@bdfc.com.vn
Contact person	Mr. Nguyen Thanh Duc – duc.nguyen@bdfc.com.vn
No. of employee	750
Main markets	Japan, USA, EU

Company Profile

	Factory 1	Factory 2
Address	40 Thap Doi, Quy Nhon, Binh Dinh, Vietnam	Lot A30-Road No15 Phu Tai Industrial Park, Quy Nhon, Vietnam
Operating space	8.000 m2	26.500 m2
Production lines	Stitching: 9	Rubber processing: 1 Printing: 3
	Emma smart cutting: 5	Vulcanizing: 1 Cold cementing: 1

Company Profile

MAJOR PRODUCT CATEGORY	MONTHLY PRODUCTION CAPACITY
Vulcanized shoes	40 000 prs
Cold cementing shoes	60 000 prs

BASIC SALE TERM & CONDITION	
Min quantity	1500 prs / color / style
Leadtime :	75-105 days
Main sea port of loading	Quynhon-Vietnam (VNUIH)
Payment term	T/T and L/C

MAIN BRANDS
Moonstar (CRST, Miki House), Columbia, DC, Eddie Bauer

Factory equipment

BASIC MACHINE / EQUIPMENT

Dept.	Name of Machine / Equipment	Q'ty
Designing	USM 2.0 Pattern cutting M/C	1
	Embroidery 4 heads - 9 needles M/C	1
Cutting	Horizontal Laminating M/C	3
	Hydraulic Cutting M/C	24
	Emma Smart Cutting M/C	5
	Cup insole machinery system	1
Stitching	Stitching M/C with direct driver of all kinds	250
	Embroidery 12 heads - 9 needles M/C	3
	Fully Auto Eyeleting M/C	3
	Computerised Stitching M/C	15

Factory equipment

Rubber	3 colors extruder M/C	2
	6 rolls rubber sheet extruder M/C	2
	Rubber mixing Mill	4
Lasting	Auto Hydraulic Sole Pressing M/C	4
	Auto Hydraulic Wall and Sole pressing M/C	16
	Hydraulic Rubber side Forming M/C	8
	Auto Hydraulic toe lasting M/C	8
	Auto Hydraulic heel lasting M/C	8
	Mid and outsole grinding M/C	20
	Completed machinery system for cold cementing	1
	Completed machinery system for vulcanizing	1
	Oil heating system for vulcanizing	1

Company overview



Factory 1

40 Thap Doi, Quy Nhon, Binh Dinh, Vietnam

Company overview



Factory 2

Lot A30, Road No 15, Phu Tai Industry Park, Quy Nhon, Vietnam

Emma Smart Cutting



Ensuring for patterns quality and increasing productivity, saving cost and labor

Table Cutting machine



Flexible with die cutting for leather and rubber details

Embroidery



Brand new 12 heads - 9 needles Tajima embroidery machines

Printing



Table silk screen printing

Stitching



Stitching



**With direct driver-servo motor to assure stitching quality,
increase productivity and low energy consumption**

Assembling



Assembling



Assembling



Assembling



Vulcanizing



Heating by cyclic oil system for better vulcanizing quality and saving energy

Finishing & Packing



Finishing & Packing



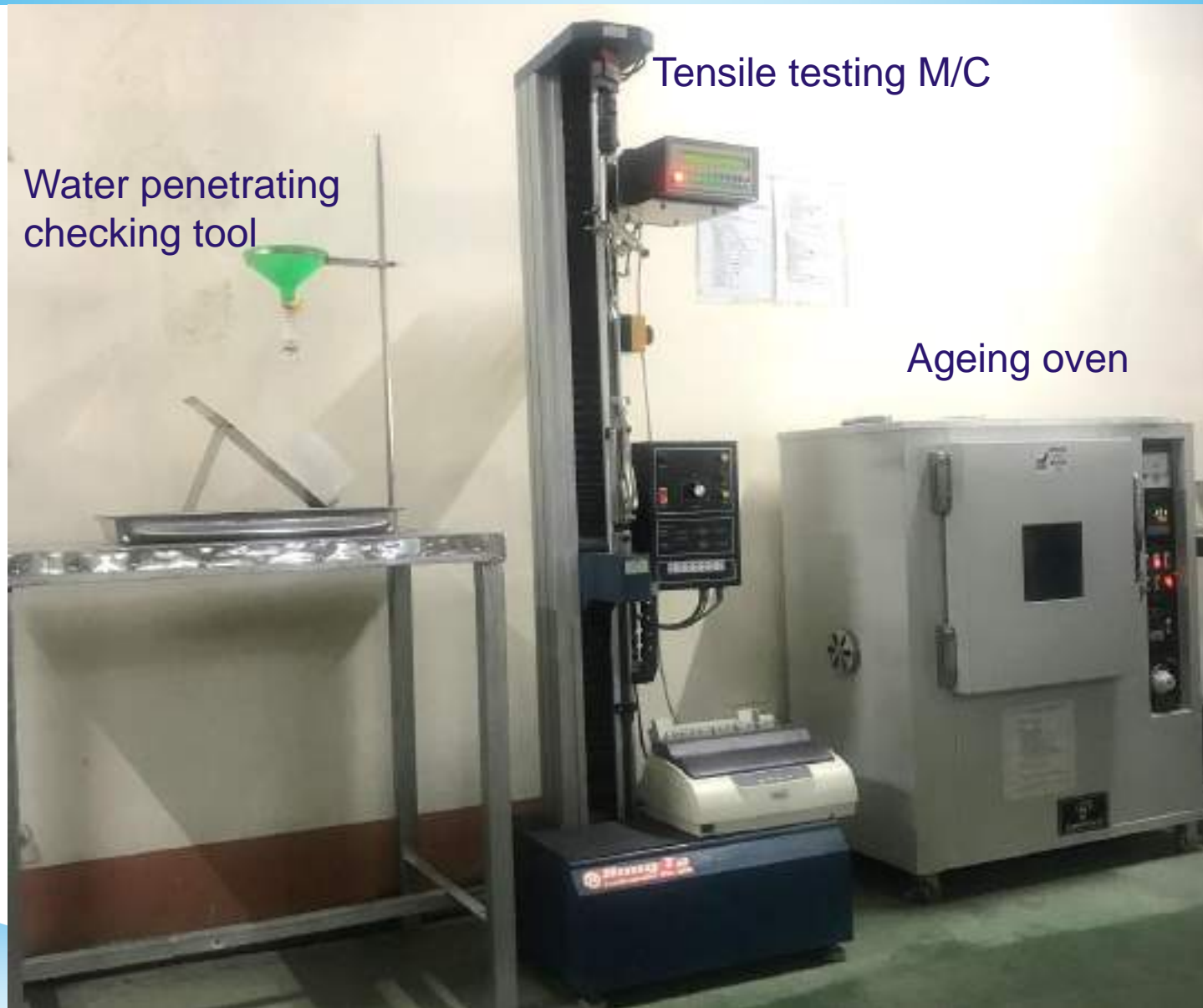
Every shoe goes through metal detecting machine at the end of the line

Finishing & Packing



Isolated packing area to assure well controlling of unidentified objects

Lab test devices



Lab test devices

Rheometer



Bending testing m/c

A white Bending testing machine, likely a universal testing machine, featuring a large cylindrical sample holder and a digital display on the front panel. The machine is mounted on a base with a red emergency stop button.

Dynamic waterproof testing m/c



Rubber processing



Better rubber components with new mixing machines equipped with blenders

Rubber processing



Rubber mixing machine

Rubber processing



6 rollers extruder machine

Rubber processing



Offer various types of embossed outsoles, foxings, bumpers

Finished products Warehouse



Equipped with selective shelves and dehumidifier

Finished products Warehouse



Equipped with selective shelves and dehumidifier

Customers and brands



Customers and brands

MIKI HOUSE



Customers and brands



Customers and brands

Eddie Bauer

**EDDIE
BAUER** 



Customers and brands

BANGS[®]



Customers and brands



THANK YOU

